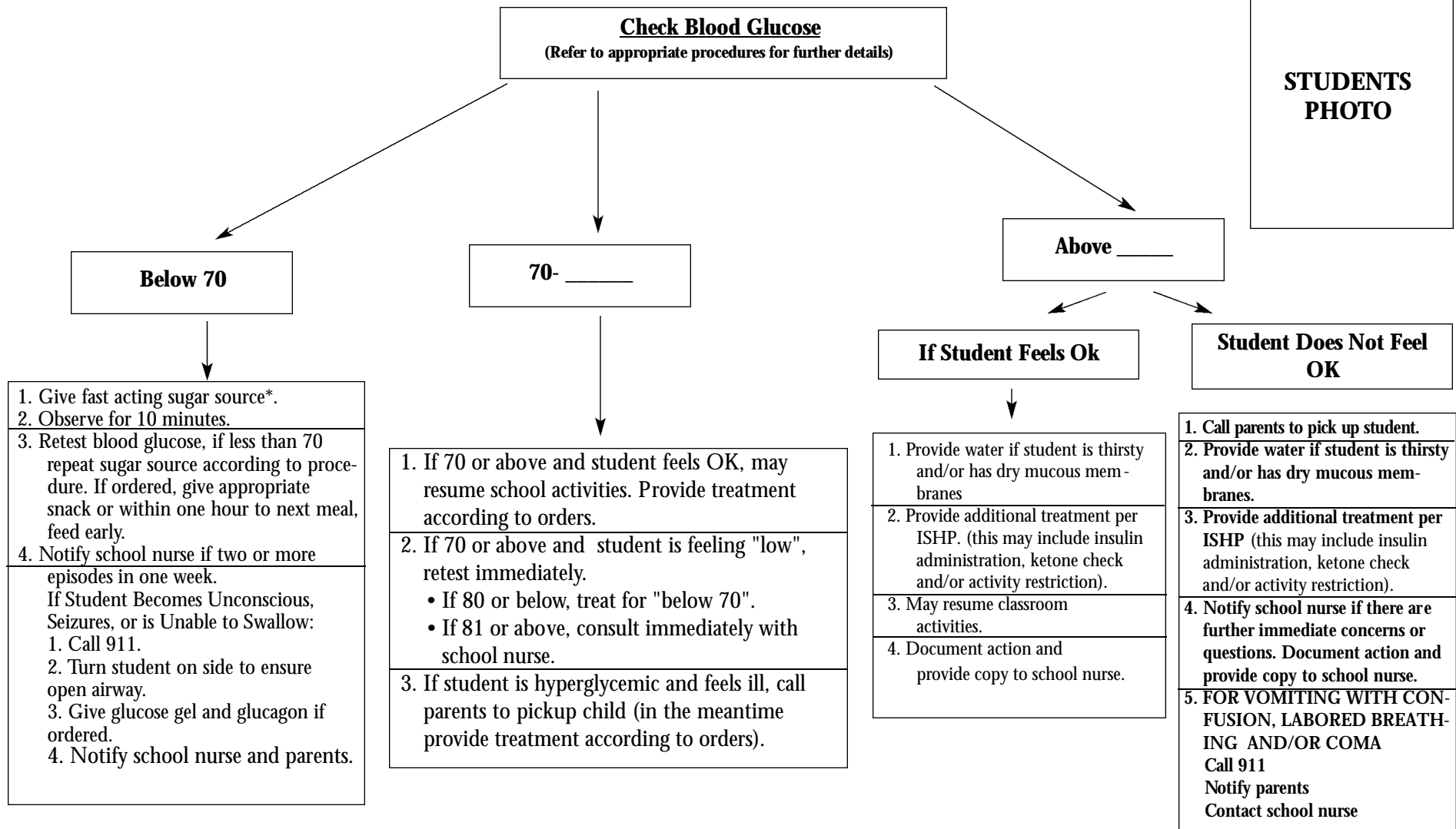


## Algorithms For Blood Glucose Results

(Attach copies to Physician Authorization page and student's ISHP)

**STUDENTS  
PHOTO**



PADRE Foundation

<b>Fast Acting Sugar Sources</b>	
<ul style="list-style-type: none"> <li>• 15 gm Glucose tablets</li> <li>• 15 gm. Glucose gel</li> <li>• 1/3 c. sugared soda</li> <li>• 1/2 c. orange juice</li> </ul>	<ul style="list-style-type: none"> <li>• 1/2 c. apple juice</li> <li>• 1/2 c. grape juice</li> <li>• 1 tube Cakemate gel (19 gm.)</li> <li>• 3 tsp. sugar (in water)</li> </ul>

<b>Student's Name:</b>
<b>School:</b>
<b>School Nurse:</b>
<b>Nurse Contact Number:</b>
<b>Parent's Phone Number:</b>
<b>Alternate ER number:</b>

Communicate with school nurse via telephone or written documentation depending on urgency of situation. School nurse will notify parent and healthcare provider per ISHP.